



BIT-EA



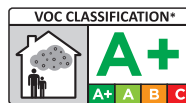
A two component chemical anchoring injection system.
A formulation derived from epoxy acrylate resin with high bond strength, developed principally to anchor threaded rods into concrete.

• CHARACTERISTICS

- Suitable for medium & high loads for non-critical applications.
- Fast working times for early loading in time sensitive applications.
- Use in damp & wet environments and fixing holes.
- Extremely versatile in masonry, hollow, aerated concrete.
- Crack and gap filling repairs in concrete vertical or horizontal.
- 10:1 resin available in a variety of cartridge types.

• APPROVALS / CERTIFICATIONS / TESTING

- ITB Approval (Poland) 0973/W
- LEED tested 2009 EQ c4.1 SCAQMD rule 1168 (2005.)
- VOC A+ Rating (Volatile Organic Content)



• PHYSICAL PROPERTIES

- Mixed Colour - Grey
- Density - 1.58 kg/m³
- Compressive Strength - 42.9 N/mm² (EN ISO 604)

• CARTRIDGE SIZES

165ml | 300ml Chubpack or Chubseal®
410ml | 345ml | 825ml



• TYPICAL TENSILE PERFORMANCE - STANDARD EMBEDMENT DEPTH

Concrete, C20/25, 5.8 Grade Studding						
Size	Recommended Load (kN)		Spacing (S _{cr,N}) (mm)	Drill Hole Ø (mm)	Fixing Hole Ø (mm)	Setting Depth (mm)
	Tension (N _{rec})	Shear (V _{rec})				
M8	9.07	5.14	160	10	9	80
M10	14.36	8.57	200	12	12	90
M12	15.49	12.00	240	14	14	110
M16	22.27	22.29	320	18	18	125
M20	34.76	34.86	400	22	22	170
M24	43.67	50.29	480	28	26	210
M30	60.74	81.43	560	35	32	280

Version 27.03.2020



BIT-EA

• WORKING AND HARDENING TIMES

Base Material Temperature	-10°C**	-5°C**	5°C	15°C	25°C	35°C
Gel Working Time	50'	40'	20'	9'	5'	3'
Curing Time Dry Concrete	240'	180'	90'	60'	30'	20'
Curing Time Wet Concrete	x 2	x 2	x 2	x 2	x 2	x 2

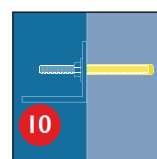
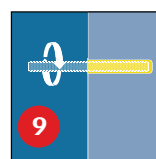
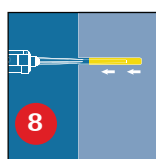
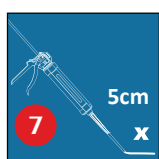
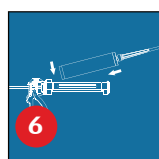
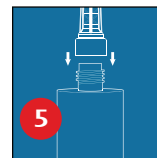
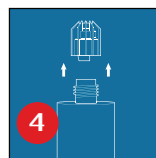
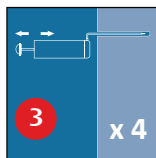
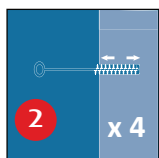
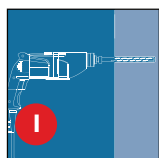
**Resin Temperature must be at least 20°C

• APPROVALS

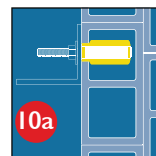
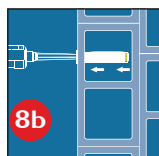
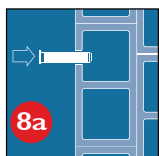


• INSTALLATION

Solid substrates



Hollow wall



For further information, refer to the technical data sheet.

• STORAGE / SHELF

This product should be stored between +5°C & +25°C.

Avoid Direct Sunlight

The Shelf life of the product is 18 months from the manufacture date.