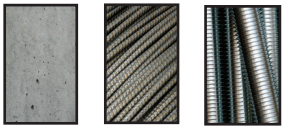




# BIT-500



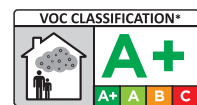
A two component chemical anchoring injection system, in 3:1 ratio. A formulation derived from pure epoxy with very high bond strength, developed principally to anchor threaded rods and rebar into concrete. Used for high performance structural applications where loading is critical.

## CHARACTERISTICS

- Suitable for high loads featuring large diameters and deep embedments.
- Longer working times make it suitable for large holes, and high temperatures.
- No shrinkage, good for large diameter fixings.
- Use in wet or flooded environments and fixing holes, or underwater.
- High durability, resistance to chemicals.
- Used for diamond drilled holes.
- Solvent free resin.
- Fixings in concrete, wood, or other high strength materials.

## APPROVALS / CERTIFICATIONS / TESTING

- 20/0053 - ETA Option 1 Cracked Concrete / TR029 / TR045 / C2 Seismic. Includes flooded holes, and wet and dry concrete conditions.
- 19/0422 - ETA TR023 Post Installed Rebar Installations.
- CE Certified 1404-CPR-3274 & 3187
- WRAS Approved for use with Potable drinking water\* 1811577
- LEED tested 2009 EQ c4.1 SCAQMD rule 1168 (2005.)
- VOC A+ Rating (Volatile Organic Content)



## PHYSICAL PROPERTIES

- Mixed Colour - Light Red or Grey
- Density - 1.6 kg/m<sup>3</sup>
- Compressive Strength - 95 N/mm<sup>2</sup> (EN 196 Part 1)



## TYPICAL TENSILE PERFORMANCE - STANDARD EMBEDMENT DEPTH

Concrete, C20/25, 5.8 Grade Studding						
Size	Recommended Load (kN)		Spacing (S <sub>cr,N</sub> ) (mm)	Drill Hole Ø (mm)	Fixing Hole Ø (mm)	Setting Depth (mm)
	Tension (N <sub>rec</sub> )	Shear (V <sub>rec</sub> )				
M8	9.07	5.14	160	10	9	80
M10	14.36	8.57	200	12	12	90
M12	20.86	12.00	240	14	14	110
M16	38.86	22.29	320	18	18	125
M20	60.69	34.86	400	22	22	170
M24	87.93	50.29	480	26	26	210
M30	138.93	81.43	600	35	32	280



# BIT-500

## • WORKING AND HARDENING TIMES

Base Material Temperature	5°C	15°C	25°C	30°C	40°C
Gel Working Time	70'	28'	22'	20'	18'
Curing Time Dry Concrete	48 hrs	30 hrs	17 hrs	16 hrs	12 hrs
Curing Time Wet Concrete	x 2	x 2	x 2	x 2	x 2

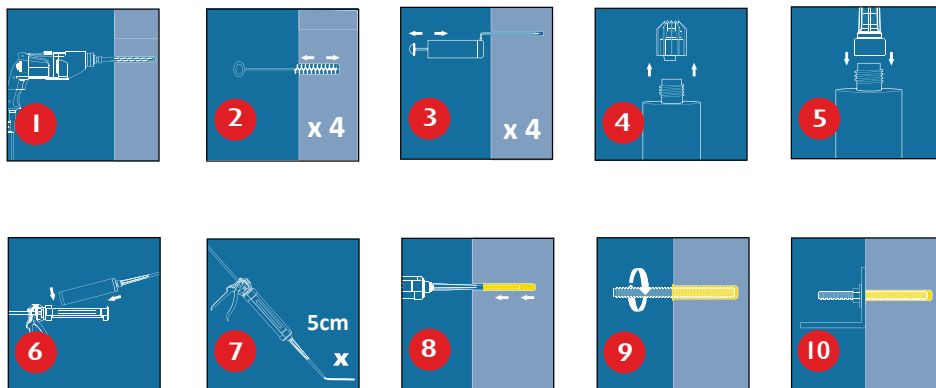
\*Note: For use with threaded bar & rebar the cartridge temperature must be between +15°C to +35°C

## • APPROVALS



## • INSTALLATION

Solid substrates



Not for use in hollow wall applications.

For further information please refer to the Technical Data Sheet

## • STORAGE / SHELF

This product should be stored between +5°C & +35°C.

Avoid Direct Sunlight

The Shelf life of the product is 24 months from the manufacture date.